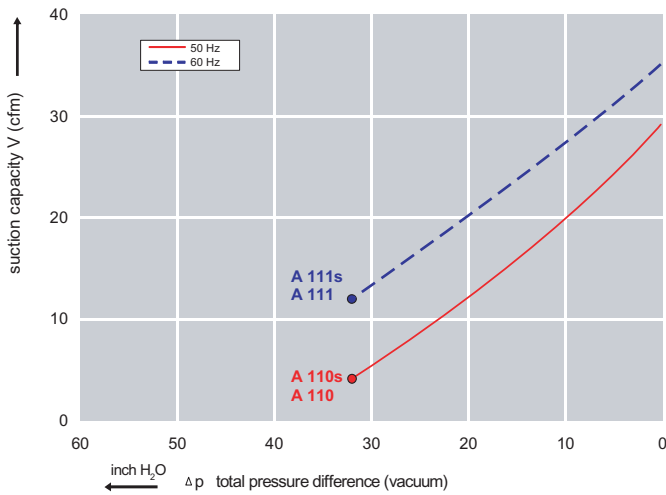




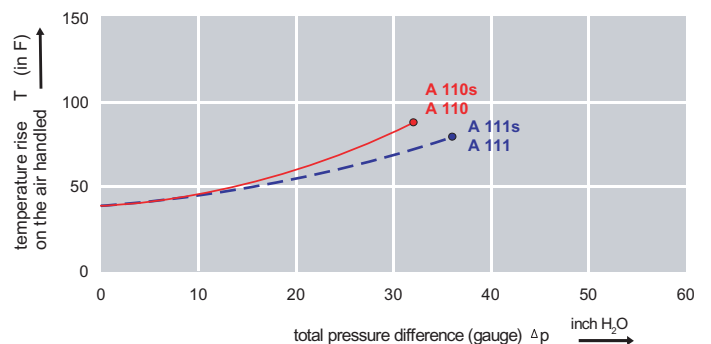
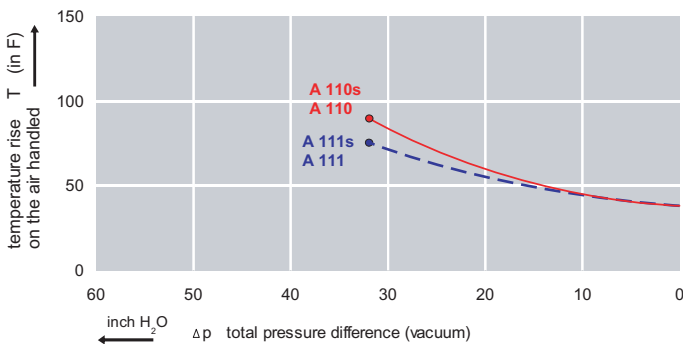
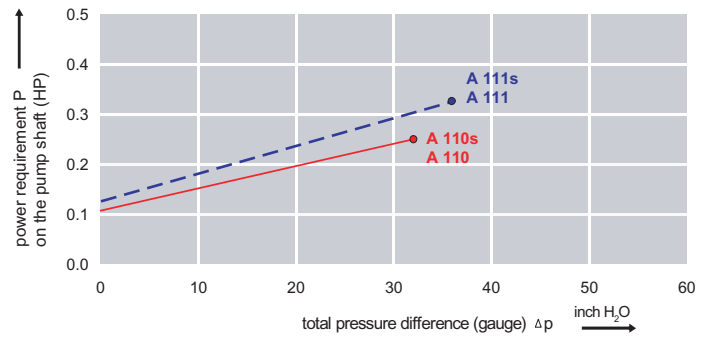
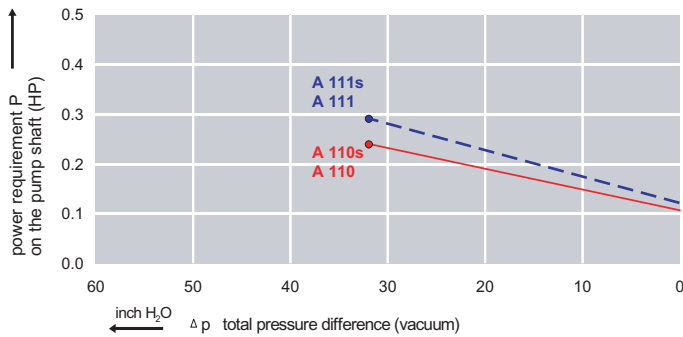
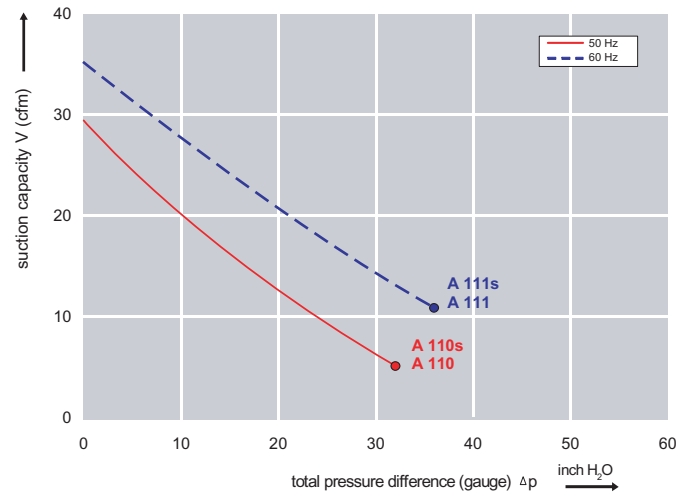
### Features:

- Cooler running, outboard bearing provides maintenance-free operation
- Environmentally friendly oil-free technology
- Extremely quiet operation
- All motors are standard TEFC with Class F insulation, UL recognized, CE Compliant  
*Explosion-Proof motors available*
- Custom construction blowers are available
- Rugged die cast aluminum construction

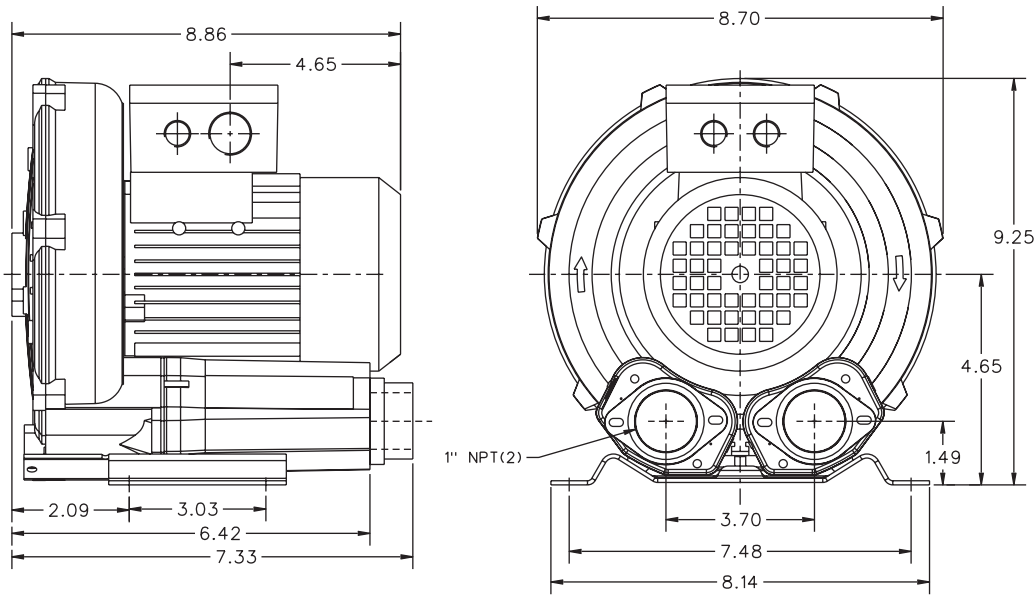
Performance curve for Vacuum pump



Performance curve for Compressor



### Dimensions: (inches)



### Relief valve:

VC51Z (Vacuum)  
PC51Z (Pressure)

### Filter:

ATF-125-1337  
(Vacuum)  
AF-S20-125-10  
(Pressure)

Specifications subject to change without notice. Please contact factory for specification updates.

### Selection & Ordering Data - Type 3BA1200

Curve No.	Order No.	Fre- quency Hz	Rated power HP	Input voltage		Input current		Permissible total differential pressure <sup>2)</sup>		Sound pressure level <sup>3)</sup> dB(A)	Weight ca. lbs
				V		A		Vacuum inch H2O	Compressor inch H2O		
<b>3~ 50/60 Hz IP55 insulation material class F</b>											
A 110	3BA1200-7AT06	50	0.33	200D ... 240D	345Y ... 415Y	1.6D	0.7 Y	-32	32	50	15
A 111	3BA1200-7AT06	60	0.37	220D ... 250D	415Y ... 460Y	1.3D	0.9 Y	-32	36	53	15
<b>1~ 50/60 Hz IP55 with attached capacitor for continuous operation</b>											
A 110s	3BA1200-7AS05	50	0.33		230		1.7	-32	32	50	15
A 111s	3BA1200-7AS05	60	0.37		230		1.9	-32	36	53	15

Suitable for 208 Volt Operation